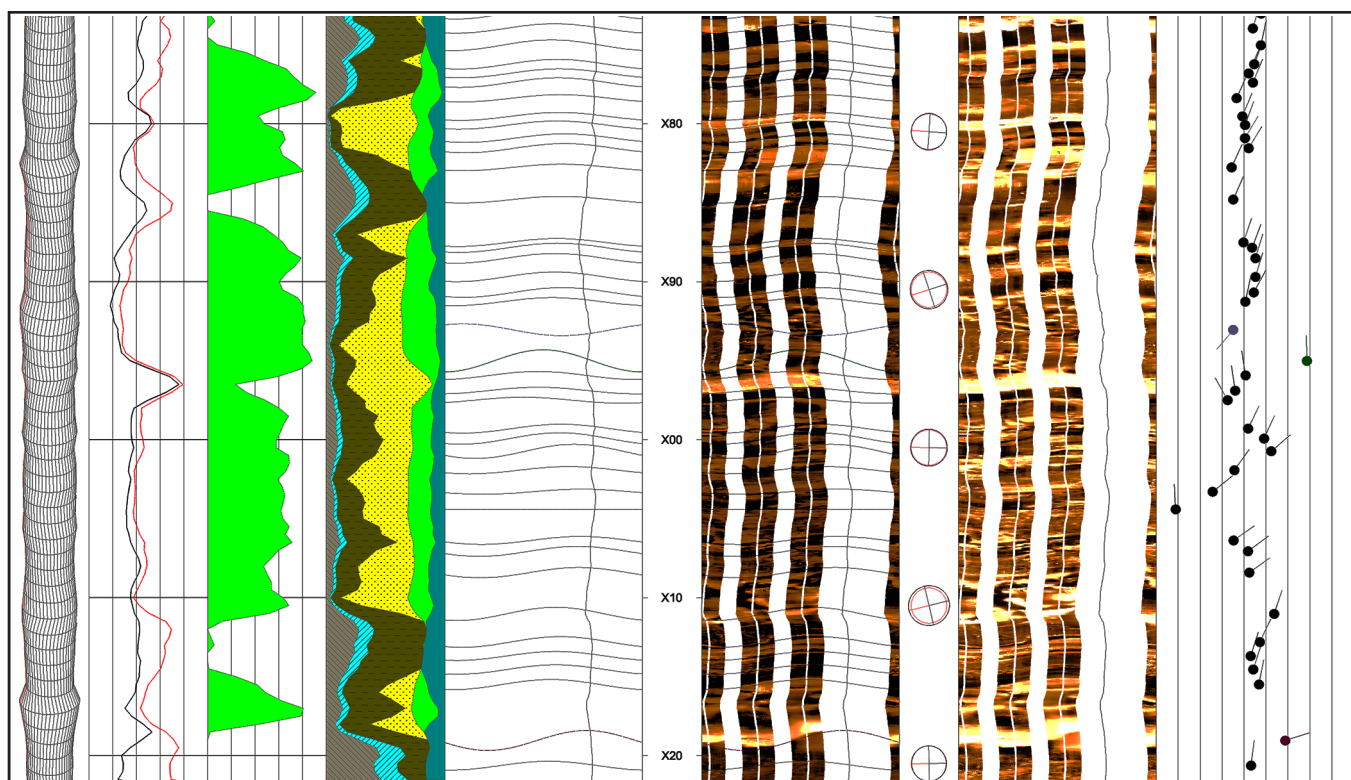


Image Log Analysis

*Personalized service - Fast turnaround -
Competitive rates*



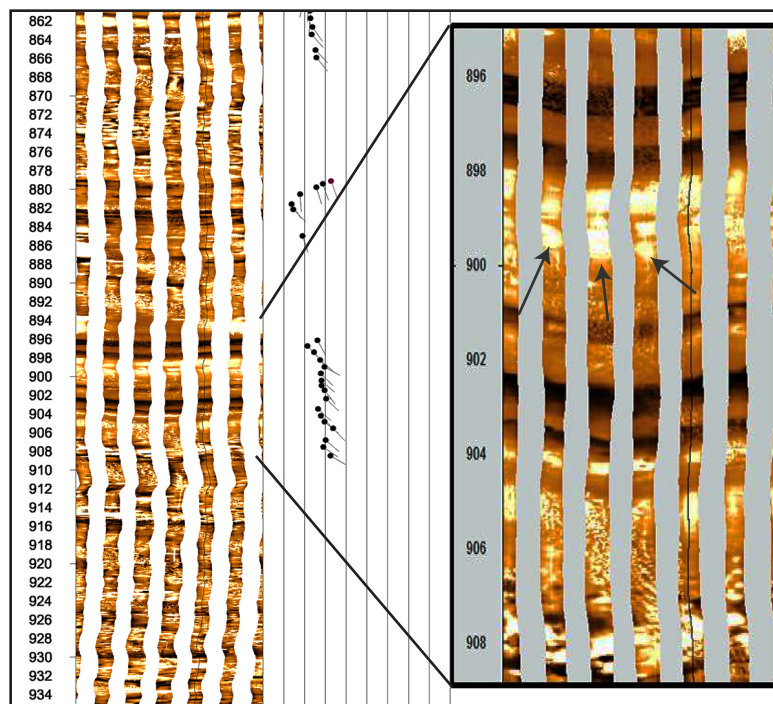
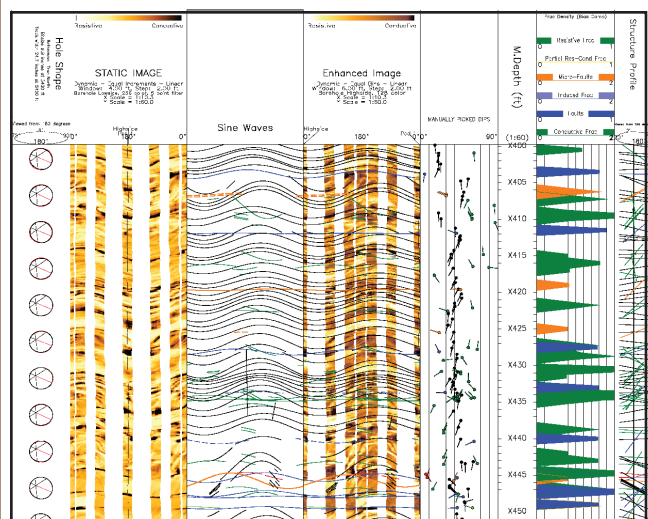
The example above shows our integrated analysis, with the petrophysical results curves to the left and the image log analysis to the right. The depositional environment is shallow marine/deltaic.

Our image log interpretation services are focused on what you need from the log - is it structural dip, or are fractures important? In some zones, you may also want stratigraphic data. By combining the image log interpretation with PayZone's powerful proprietary open-hole petrophysical analysis, we can integrate your log and core data into a comprehensive and well-documented assessment of your reservoir's potential.

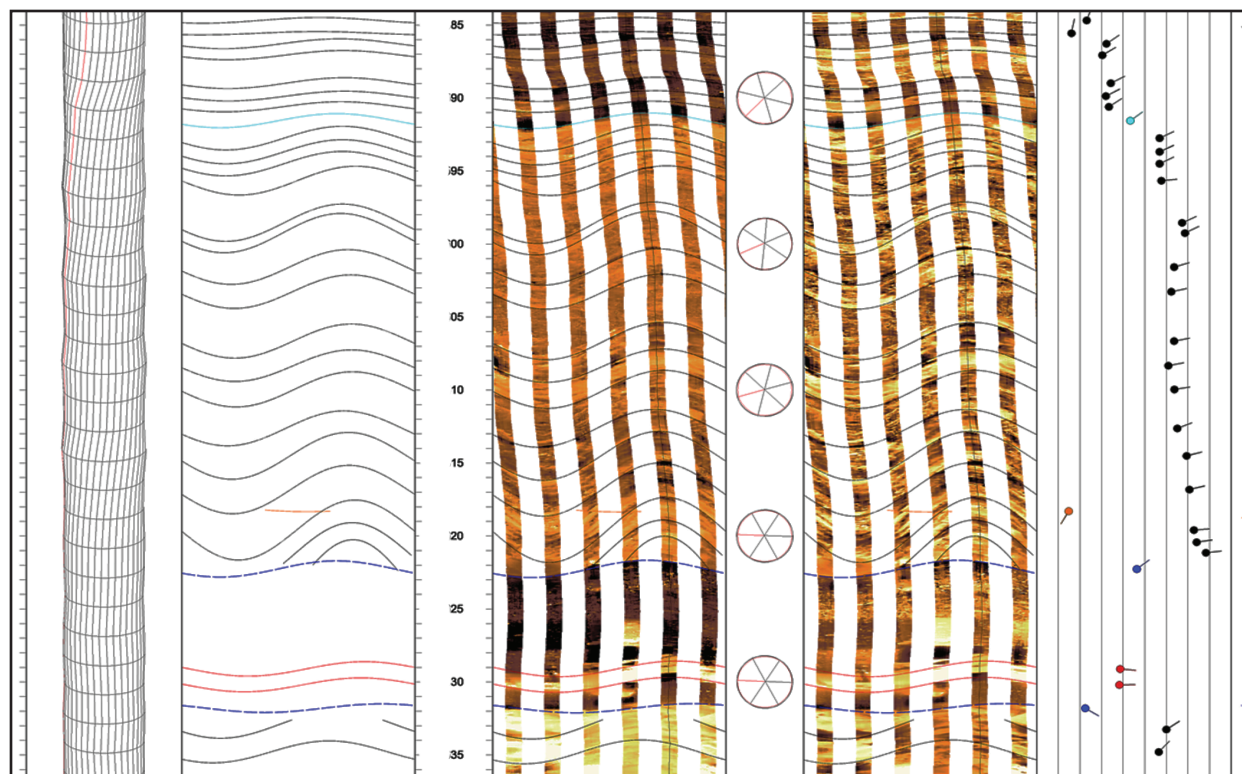
Thomas M. Howard, Geologist/Principal Image Log Analyst
tomh@payzoneinc.com 832-407-2862

Image Log Analysis Examples

The example below shows a highly faulted and fractured section. The color coding distinguishes faults from various types of fractures.



The example above (right) shows a conglomeratic interval in a thick sandstone sequence. The inset detail log illustrates the appearance of the cobbles on the image log; arrows point to several clasts. The conglomerates appeared on open-hole logs as high-resistivity which was previously mistaken as pay.



This log shows several abrupt changes in dip which correspond with facies changes, indicating potential faulting.